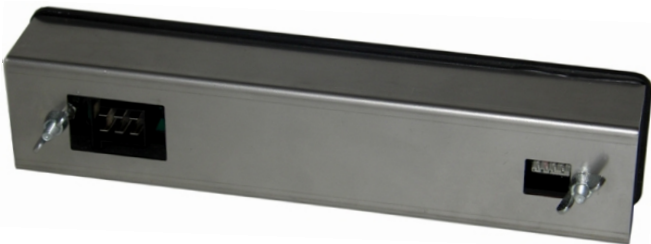




AT13 front view



AT13 back view including bracket

Technical data:

Dimensions	w 204 x h 49 x d 45 mm
Mounting hole	w 193 x h 40 mm
Weight	320 gram
Fixture	front panel installation via 1 bracket
Current consumption	70 mA (on 24V)
Supply voltage	10 - 32 VDC, including reverse voltage protection
Interfaces	CAN ISO11898
Test standards EMC, temperature, vibration, shock	EN61000-6-3, EN61000-6-2, ISO7637, IEC 68-2-2, IEC 68-2-30, IEC 68-2-6 IEC 68-2-27, e1
Protection rating enclosure	IP65 acc. to DIN60529
Operating temperature	-20°C to +70°C
Storage temperature	-30°C to +80°C
Load-dump stability	severity level I (70 V)
Miscellaneous	integrated buzzer

We reserve the right to make technical alterations without prior notice. Status: April 7 2008.

H164A2

Designed for machinery and vehicle technology
AT13 offers:

Night vision design

Illuminated rings around the keys as well as the background illumination of the labelling area ensure a trouble-free operability at night.

Status display

6 integrated LEDs can be used for displaying system states and different machinery conditions.

Sealed enclosure IP65

The total enclosure is well protected against the intrusion of soil and wetness according to protection rating IP65.

Freely writeable function keys

The function keys F1 - F6 can be individually labelled via integrated retractable strap.

Simple connection

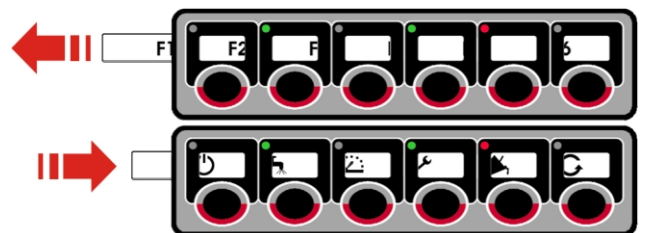
For starting up only the connection of CAN bus as well as supply voltage is necessary.

Parameterising instead of programming

The keypad unit can be parameterised via 4 DIP switcher. Additionally we provide a free parameterising software for individual modification of the default settings.



AT13 back view exclusive of bracket



AT13 including retractable labelling strap

