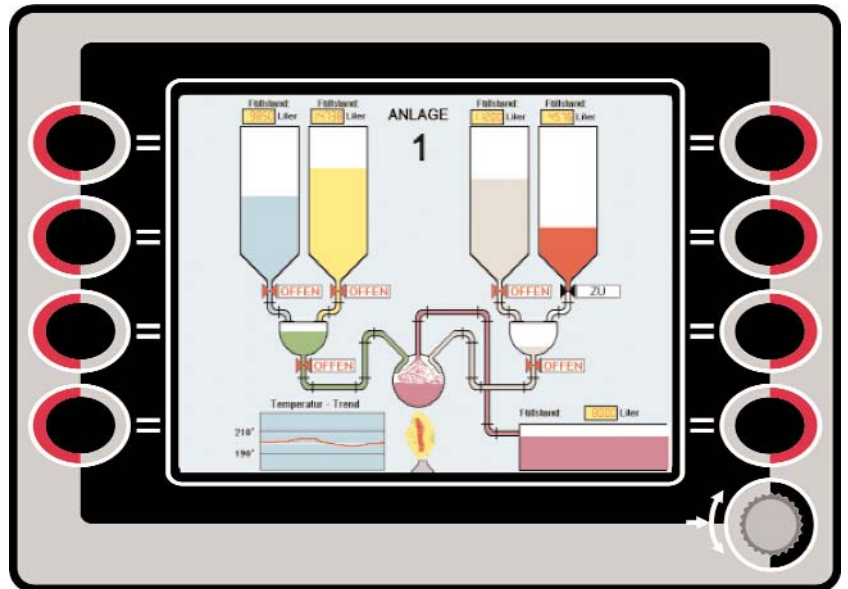


AT8-series Colour HMI/Control unit



The AT8-Series is a very efficient TFT colour graphics control unit, designed for rough environmental industrial and vehicle applications. The control unit has eight freely programmable function keys and a digital input potentiometer for easy one hand operation.

The potentiometer and keys are bordered with a white ring (for night vision). The unit can be connected to J1939 interface and receive all the information from other CAN controllers such as engines, transmission etc which can be displayed to customer requirements.

A dual CAN Port option allows the unit to communicate to the engine and to other equipment on the system at the same time without upsetting the CANbus.

The CANbus interface and RS232 serial interface are integrated in the CAN-Bus control unit, which is programmed with the editor ITE6x18, permitting simple and fast graphic programming, direct arbitrary numeric functions, flow controls, linkages and computations. The editor also offers the possibility of complex functions and displays, for example: bar graph display and pointer instrumentation.

There are no limits to the application variations of the AT8-Series. The editor version ITE6D18 offers the possibility of incorporating the ladder diagram (KOP) or the integrated C-Programming, the integration of obj Drivers into the system permitting the adjustment of further systems, e.g bar code readers, drivers for external components.

- **TFT Colour display**
- **Simple quick input**
- **Optional Clock/Timer**
- **Rugged design**
- **Night vision**
- **Video input**
- **CAN-Bus interface**
- **J1939, CAN 2.0B and other interfaces available**

Sensor-Technik UK Ltd
Unit 10, The Granary
Mill Road, Sharnbrook
Bedfordshire MK44 1NN
Telephone 01234 782049
Fax 01234 782056
sales@sensor-technik.co.uk
www.sensor-technik.co.uk

AT8-Series technical data

Display:

Graphic, 320 x 240 Pixel TFT-LCD (1/4 VGA)

Visual area:

111 x 83.5 mm

Input control:

1 Potentiometer with detent and 8 push buttons

Memory:

2.2 MB Flash max.
256 kB SRAM max.
2 kB EEPROM

Dimensions:

204 mm x 140 mm x 49 mm

Mounting:

Front panel or build-on enclosure

Interface:

CAN-Interface to ISO11898; 2nd interface optional

Programming:

C with graphics editor ITE6x18

Special feature:

Night design of keys

EMC, vibration, shock:

EN50081-1, EN61000-6-2, IEC68-2-2, IEC68-2-6, IEC68-2-27, IEC68-2-30, DIN40838 part 1

Power supply:

10 – 32 VDC

Current consumption:

600 mA (Uoperate=24V)

Load-dump resistance:

Included, Level II (113V)

Operation temperature:

LCD Display –20C to +80C

Storage temperature:

LCD Display –40°C to +95°C

Protection rating:

IP65 to the front according to EN60529

Options:

Clock, build-on enclosure, video input, internal battery

Panel Mounting Cut-out:

195 ±0.5mm width, 132 ±0.5mm height

Panel Thickness

1.5 to 3.0mm

Electrical connector:

AMP 0-929504-2 Housing

AMP 0-927864-2 Pins

(Mating unit supplied)

Ordering Code:

Model AT82

Options: Clock/Build-on Enclosure/Internal battery back up/Video Input

Programming tools:

C version: Free display software

D version: for CAN Control

E version for J1939 protocol

CAN Adaptor (Parallel Port)

Cable

9 pole RS232

We reserve the right to make technical alternations without prior notice