

**STW C2U-Mini
Datenlogger**

STW-Datenlogger (YC2UM)



The STW-C2U-Mini CAN-Datalogger is an automotive memory device that can be accessed via CAN and USB. Depending on its configuration it records CAN-messages of desired identifiers or it can be used like a memory-stick to write and read files via CAN and USB.

Features:

System

- 16bit Controller, ST10F273 40MHz
- 512kB RAM, 512 kB Program-Flash
- 128MB NAND-Flash-Memory (for Recording Data)

Vehicle Interface

- Generic 8pin - M9-Plug
- (for customised cable-set to connect to vehicle)
- Power supply 9...32V DC
- Current consumption 80mA @ 12V
- 2x CAN 2.0 B (11 und 29 Bit Identifier), Low-/High-Speed up to 1 MBit/s
- 3color LED for status signalling

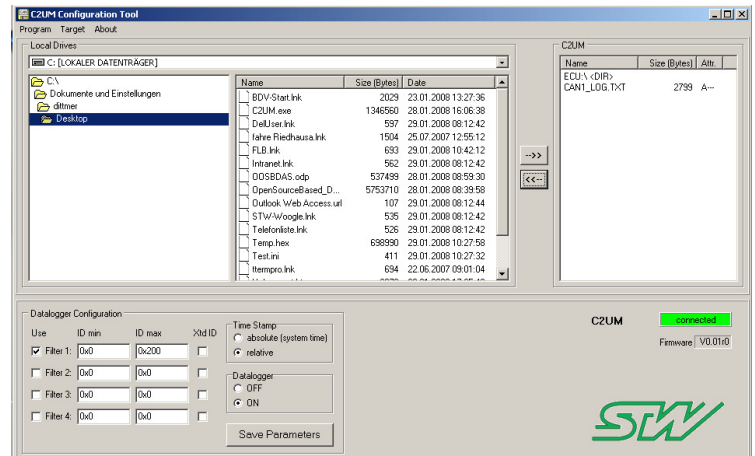
PC-Interface

- USB2.0-Interface (for Data-Exchange)
- Power supply (5V) over USB

Functions

- Read / Write files via CAN-messages by CAN-Controllers (eg. ESX)
- Read / Write files via USB by PC-Programm
- Logging CAN-Messages of desired identifiers in ASCII file
- (future: ring buffer recording and pre/post trigger functions)

Easy to use and intuitive PC-Software:



Available parts:



YC2U Mini –
CAN/USB Datalogger



Mounting-holder



PC-Tool Software



Cabel-Set

(Note: A Customised cable set should be defined according to your requirements)