

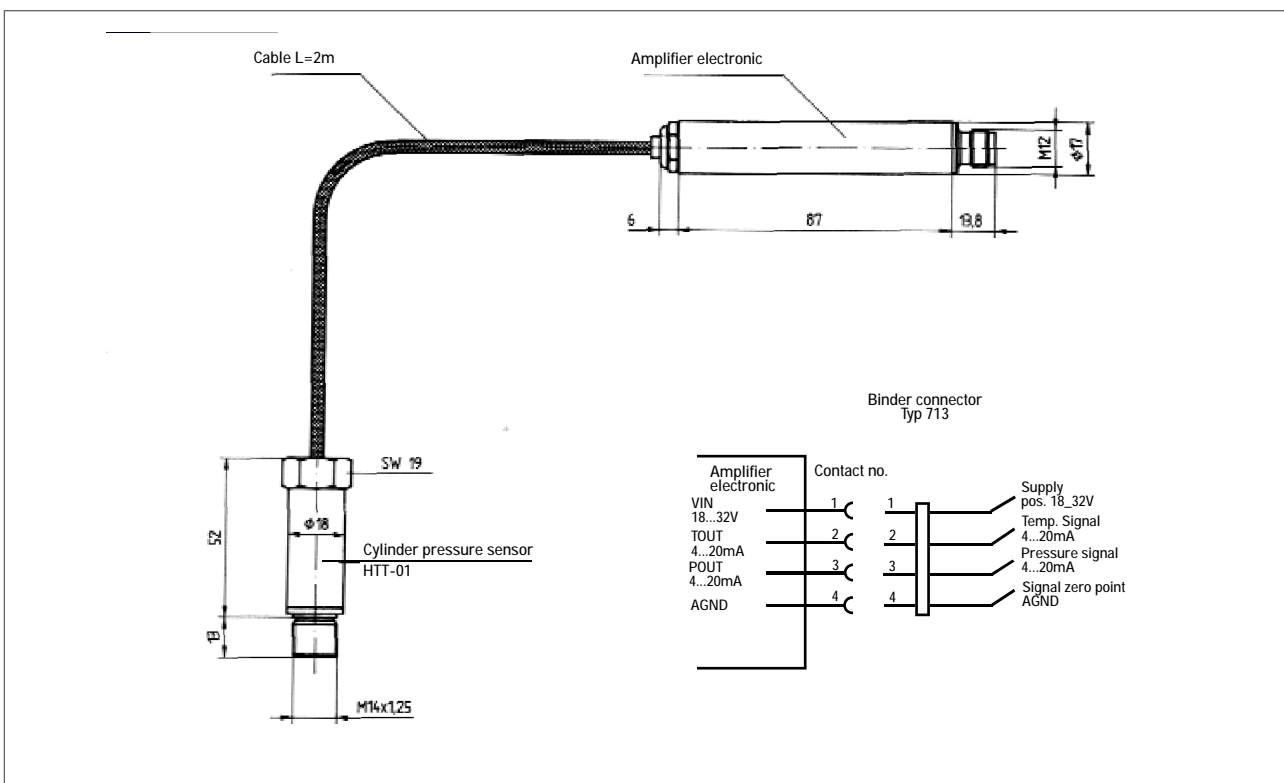
High Temperature Cylinder Pressure Sensor Type: HTT-01

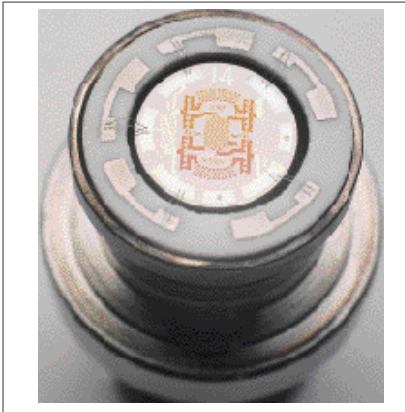
for continuous cylinder pressure monitoring on Diesel-and Gasengines

- Thinfilm measuring element on stainless steel
- Output signal for pressure and temperature
- High medium temperature
- Thread M14 x 1,25
- Design at thompson adapter

Application:

- Cylinder pressure monitoring systems
- Portable engine indication systems
- Engine test bed





For new and demanding applications in measuring and control technology more and more sensors employing the thin film principle are being used.

Their major advantage: maximum information content in minimum dimensions, extreme flexibility, high precision and economic production.

Example: thin film structures of a bonded - strain gauge - pressure measuring cell, as used for internal combustion engine cylinder pressure sensors. A patented thin film strain gauge material is employed.

Technical Data HTT-01		
Measuring range pressure	bar	0...300, others on request
Overload pressure	bar	800
Load cycles		$\leq 10^8$ Full load cycles
Frequency range	KHz	20
Accuracy at balancing temp.	%	± 1
Sensor housing temperature	°C	max. 300
Supply voltage	VDC	18...30
Output signal pressure	mA	4...20
Output signal temperature	mA	4...20
Electrical connector		Plug connection M12
Thread		M 14 x 1,25; others on request
Dimension sensor	mm	65 x \varnothing 18 ; SW 19
Tightening torque	Nm	25
Weight incl. electronic	g	250

Scope of Supply:

- Cylinder Pressure Sensor HTT-01

Option:

- Measuring range 0...200 bar, 0...250 bar
 - Thread M18 x 1.5; M10 x 1
 - Frequency range 500 Hz, 1000 Hz