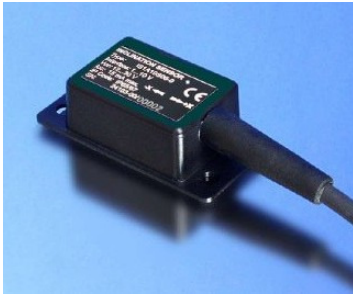
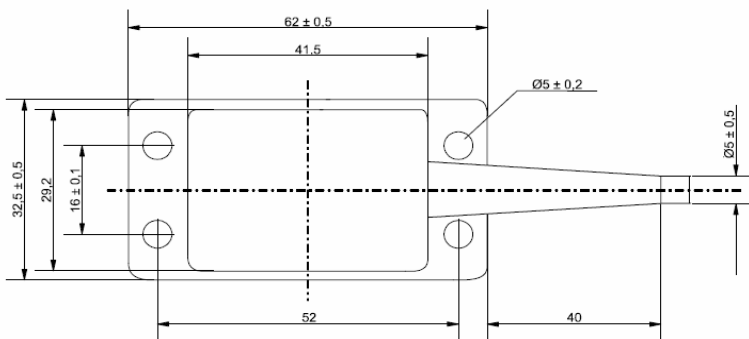


Serie MR401

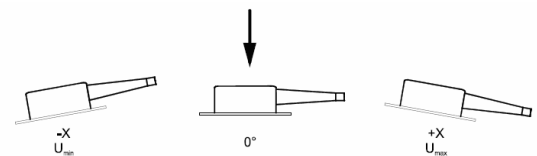


- 1-dimensional inclination sensor with measurement range $\pm 10^\circ$
- High resolution and accuracy
- 0...10V voltage interface
- Robust, simply mountable ABS-housing
- Temperature range -40°C to $+80^\circ\text{C}$
- Application:
 - Industry automation
 - Agricultural and forestry machines
 - Utility vehicles
 - Crane and hoisting technology

Outline drawing



Direction of gravity



Order key
Type

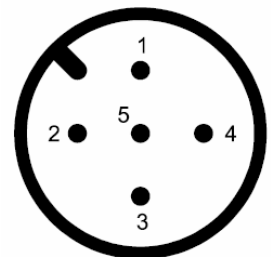
Inclination Sensor
MR401

General Parameters

Measurement axes	1 axis
Measurement range	$\pm 10^\circ$
Resolution (at zero point)	0.05°
Calibration accuracy (at 25° C)	$\pm 0.1^\circ$
Nonlinearity (sine)	Max. $\pm 0.3^\circ$
Temperature coefficient (zero point)	Max. $\pm 0.015^\circ/\text{K}$
Critical frequency	typ. 18 Hz

Plug Connector Allocation:

- 1 = Supply voltage
- 2 = Reference potential for sensor signal
- 3 = GND
- 4 = Sensor signal
- 5 = not used



(View from the outside)

Characteristics

Interface: voltage output 0...10 V

Electrical Parameters

Supply voltage	12 V DC to 30 V DC
Current consumption	10 mA to 15 mA

Mechanical Parameter

Connector	sensor connector 5-pole (M12)
Degree of protection	IP 65/67
Shock survival	Max. 20,000 g
Dimensions	65 mm x 35 mm x 20 mm
Mass	about 96 g incl. cable

Serie MR401

